



OPPEIN

OPPEIN HOME GROUP INC.

Add: #366, Guanghua 3rd Road, Baiyun District,
Guangzhou, China
www.oppeinhome.com

OPPEIN CABINETRY

Add: 474 Attwell Dr, Etobicoke, ON M9W 5C3
www.oppeincabinetry.ca
☎ 1-416-798-8885 ✉ Info@oppeincabinetry.ca



360° Kitchen Showroom



360° Bathroom Showroom



FRAMELESS EURO STYLE CLOSET

The World's Largest Cabinetry Manufacturer

OPPEIN

OPPEIN

WHERE THERE IS HOME AND LOVE, THERE IS OPPEIN



CONTENTS

- 01 COMPANY PROFILE
- 07 PRODUCT PROFILE
- 09 PRODUCT DISPLAY
- 11 CLOSET SPECIFICATION & MSRP



Guangzhou Headquarters

ABOUT OPPEIN

Founded in 1994, OPPEIN is China's No.1 kitchen and customized home decor brand, and the world's largest cabinetry manufacturer. We design and manufacture high-quality kitchens, wardrobes, bespoke home furniture, bathroom products, interior doors, aluminum windows & doors and home furnishing, capable of offering one-stop home decor products and solutions. Output and sales of kitchen cabinet reached 850 thousand sets, ranking No.1 in the kitchen industry.

In 2022, OPPEIN's sales turnover reached USD 3.24 billion, harvesting its consecutive 29th years of growth. Output and sales of cabinets reached 6 million sets, ranking No.1 in the cabinetry industry. Our products have been exported to 118 countries and regions, and the total market value of OPPEIN exceeded 100 billion yuan (USD 15.3 billion) in March 2021.

In overseas markets, what sets us apart from our competitors is our Italy design, European quality, one-stop whole-house products & solutions, and reliable local services.

OPPEIN takes great pride in its extensive franchise distribution system. We have a productive showroom operation model and thoughtful support policies to help the franchisees win. Currently, we have a remarkable number of over 7,500 franchise showrooms worldwide to serve local retail businesses.

The global project business is another importance we attach to. We cooperate closely with builders, developers, contractors, and architects to develop different types of residential and commercial business; up to now, we have completed over 10,000 real estate projects around the globe, including some significant local landmark projects.

We achieve this through our unceasing striving for perfection, and the passion to satisfy an individual's needs for better home decor. Our vision is to make OPPEIN a modern, innovative company respected and loved by the people, held in the highest esteem in China, and emulated around the world.

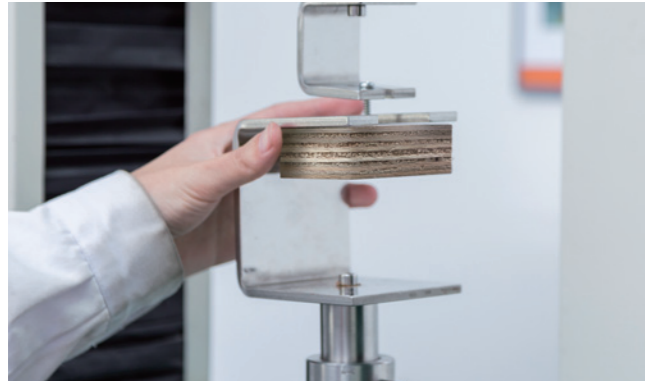
Where there is home and love, there OPPEIN is.

OPPEIN AI SYSTEMS

All-digital Intelligent Manufacturing Production System

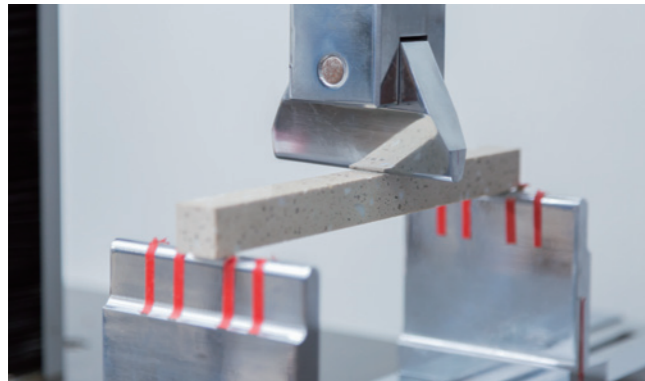


QUALITY TESTS-FUNCTIONAL AND CONTINUOUS OPERATION



Screw & Nail Holding Performance Tests

Nails and screws are the most commonly used fasteners used for wood and wood based products. To test the various loads and ways in which nails and screws fail, they are tested in tension using withdrawal and pull-through tests and in shear using lateral movement tests.



Countertop Bending Strength Test

Countertop bending tests are conducted by placing a length of material across a span and pushing down along the span to bend the material until failure. Bending tests reveal the elastic modulus of bending, flexural stress, and flexural strain of our countertops.



Thickness Swelling Test

Samples are horizontally submerged under 1 inch of water, and after 2 hours, the samples are removed from water, drained, and weight and thickness are then measured. The samples are then submerged for an additional 22 hours and then measured.



Edg Band Temperature Cycle Test

Temperature Cycle Test (TCT) determines the ability of sealed edge bands to resist extremely low and extremely high temperatures, as well as their ability to withstand cyclical exposures to these temperature extremes.

Hinge Salt Test

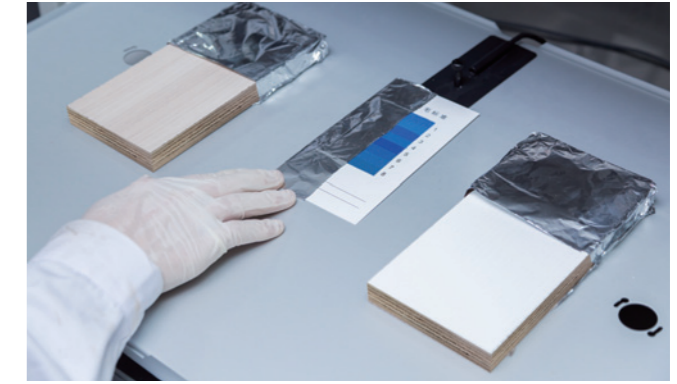
Hinges are subjected to salt spray tests within the controlled environment to simulate an artificial atmosphere. Products are placed in the cabinet for a specific time period where a fine mist of salt water is allowed to 'attack' the products and identify the level of corrosion resistance that they can stand.

QUALITY TESTS-FORMALDEHYDE EMISSION



Formaldehyde Emission Tests -Perforator Methods

Perforator method is suitable for uncoated PB,MDF and OSB. It determines the formaldehyde content in mg/100g.The standard of European class E1 is less than 8.0mg/100g.



Color Fastness For Thermofoil -Faced Boards

Color fastness test is made using filtered xenon arc lamps which simulate UV and visible solar radiation to assess the accelerated light ageing of thermofoil surface. which are sensitive to the long-wave and visible wavelengths of sunlight.



Formaldehyde Emission Tests -Desiccator Methods

Perforator method is suitable for uncoated or coated MDF and PB It determines the formaldehyde content in mg/L.The Japanese JIS standards F4 is less than 0.3mg/L.



MILESTONE

1994

Oppein Home Group was established and produced the first integrated kitchen.

2004

Started the business of bathroom and sanitary ware.

2006

Started the business of wardrobe business.

2010

Started the business of interior door.

★ 2015

The Group launched a new high-end brand: Oppolia to further improve the customer service system and enhance brand value.

2016

Proceeded Whole House Customization Mall, leading the second revolution in the industry.

2017

Went public in Shanghai Stock Exchange with stock code 603833.

2018

Started the business of metal doors and windows.

2019

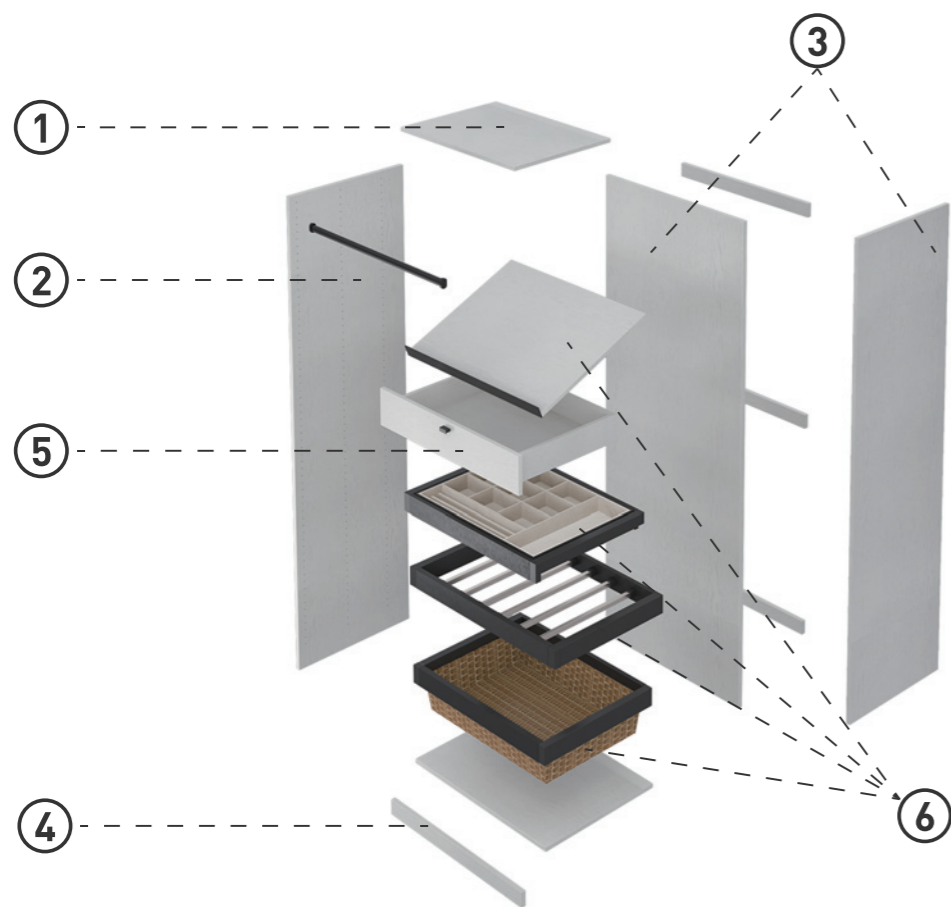
Won the awards of China's Top 500 Manufacturing Enterprises /Pioneer in the High-Quality Development of China's Listed Companies

2021

The total market value of OPPEIN 2021 exceeded USD 15.3 billion in March 2021. Get Reddot award 2021 winner.

PRODUCT PROFILE

- ① 15" and 24" depth available
- ② 32mm drilling system, standard units with shelves or hanging rods
- ③ 3/4" thickness side panel and 9mm(3/8") back panel
- ④ 3" height toekick of matching color
- ⑤ 4 sizes of drawers are free for customization
- ⑥ More accessories are available



1. Basic unit comes in two depth, 24" and 15". 32mm system drills are applied on side panel, easy to install all hardware & accessories, and provide various of custom possibilities.
2. The grain direction (if there is any) of side panel is vertical, and horizontal for bottom, top & shelf panel.
3. The closet box is amount with cam-lock and dowel.
4. The back panel is a 9mm thickness full panel.
5. The thickness of drawer box is 12mm.
6. Match finish drawer box with bottom mount 550mm & 300mm DTC slide.



The timeless beauty of the Classic White finish adds a touch of elegance to any wardrobe.



**Pure White
(MPW)**



CLOSET SPECIFICATION & MSRP



Closet Basic Section for Shelves

SKU	Dimensions	Price
C1584D	15"W x 84"H x 24"D	692
C1884D	18"W x 84"H x 24"D	830
C2484D	24"W x 84"H x 24"D	970
C3084D	30"W x 84"H x 24"D	1109
C3684D	36"W x 84"H x 24"D	1247

Note: Basic section unit comes with 4 adjustable shelves.

CLOSET SPECIFICATION & MSRP



Closet Basic Section for Hanging

SKU	Dimensions	Price
C3084HD	30"W x 84"H x 24"D	1067
C3684HD	36"W x 84"H x 24"D	1172

Note: Basic section unit comes with 1 adjustable shelf & 2 hanging rods.



Closet Basic Section for Shelves

SKU	Dimensions	Price
C1584	15"W x 84"H x 15"D	473
C1884	18"W x 84"H x 15"D	578
C2484	24"W x 84"H x 15"D	686
C3084	30"W x 84"H x 15"D	792
C3684	36"W x 84"H x 15"D	897

Note: Basic section unit comes with 4 adjustable shelves.



Closet Basic Section for Hanging

SKU	Dimensions	Price
C3084H	30"W x 84"H x 15"D	832
C3684H	36"W x 84"H x 15"D	920

Note: Basic section unit comes with 1 adjustable shelf & 2 hanging rods.

CLOSET SPECIFICATION & MSRP



Closet Base Section

SKU	Dimensions	Price
CB24D	24"W x 42"H x 24"D	426
CB30D	30"W x 42"H x 24"D	482

Note: Can be flexibly used with DN and DH drawers.



Closet Base Section

SKU	Dimensions	Price
CB24	24"W x 42"H x 15"D	308
CB30	30"W x 42"H x 15"D	353

Note: Can be flexibly used with N and H drawers.



Closet Corner Section

SKU	Dimensions	Price
ER3084	30"W x 84"H x 30"D	1247

Note: Side panel depth 15", comes with 1 adjustable shelf and 2 hanging rods.

CLOSET SPECIFICATION & MSRP



Drawer

SKU	Dimensions	Price
DB24N	24"W x 6 1/8"H x 11 1/2"D	207
DB30N	30"W x 6 1/8"H x 11 1/2"D	217
DB36N	36"W x 6 1/8"H x 11 1/2"D	231

Note: Drawer front height = 157mm (6"1/8 inch),
Drawer slide length =290mm (11"1/2 inch).



Drawer

SKU	Dimensions	Price
DB24DN	24"W x 6 1/8"H x 21 1/4"D	216
DB30DN	30"W x 6 1/8"H x 21 1/4"D	224
DB36DN	36"W x 6 1/8"H x 21 1/4"D	242

Note: Drawer front height = 157mm (6"1/8 inch),
Drawer slide length = 540mm (21"1/4 inch).



Drawer

SKU	Dimensions	Price
DB24H	24"W x 12 1/2"H x 11 1/2"D	217
DB30H	30"W x 12 1/2"H x 11 1/2"D	228
DB36H	36"W x 12 1/2"H x 11 1/2"D	252

Note: Drawer front height = 317mm (12"1/2 inch),
Drawer slide length =290mm (11"1/2 inch).

CLOSET SPECIFICATION & MSRP

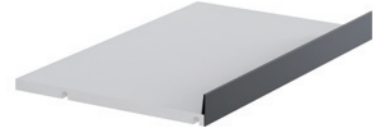
Drawer



SKU	Dimensions	Price
DB24DH	24"W x 12 1/2"H x 21 1/4"D	237
DB30DH	30"W x 12 1/2"H x 21 1/4"D	251
DB36DH	36"W x 12 1/2"H x 21 1/4"D	276

Note: Drawer front height = 317mm (12"1/2 inch),
 Drawer slide length = 540mm (21"1/4 inch).

Shoe Shelf



SKU	Dimensions	Price
SS24	/	128
SS30	/	165
SS36	/	195

Note: With black matte aluminum alloy front.
 Exchangeable shelf fit for 24" depth units.
 Code number refers to fit width

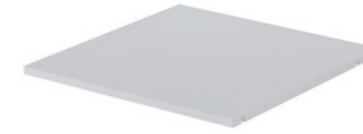
Hanging Rob



SKU	Dimensions	Price
HR24	24"W	84
HR30	30"W	90
HR36	36"W	95

CLOSET SPECIFICATION & MSRP

Shelf Panel



SKU	Dimensions	Price
S24D	/	77
S30D	/	96
S36D	/	114

Note: Exchangeable shelf fit for 24" depth units.
 Code number refers to fit width.

Shelf Panel



SKU	Dimensions	Price
S24	/	49
S30	/	60
S36	/	73

Note: Exchangeable shelf fit for 15" depth units.
 Code number refers to fit width.

Shelf Panel



SKU	Dimensions	Price
S30ER	/	124

Note: Exchangeable shelf fit for corner units.
 Code number refers to fit width.

CLOSET SPECIFICATION & MSRP



Filler

SKU	Dimensions	Price
CTF384	3"W x 84"H x 3/4"D	52
CTF684	6"W x 84"H x 3/4"D	98



Slide Out Organizer

SKU	Dimensions	Price
OD30	/	588
OD36	/	609

Note: Fit for 30" and 36" width, 24" depth section units, dark brown rack with soft close slide.

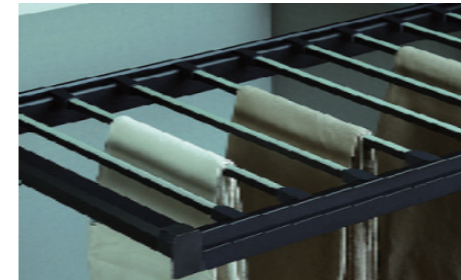


Slide Out Basket

SKU	Dimensions	Price
BSK30	/	508
BSK36	/	547

Note: Fit for 30" and 36" width, 24" depth section units, dark brown rack with soft close slide.

CLOSET SPECIFICATION & MSRP



Slide Out Trouser Rack

SKU	Dimensions	Price
TR30	/	406
TR36	/	447

Note: Fit for 30" and 36" width, 24" depth section units, dark brown rack with soft close slide.

LIMITED WARRANTY POLICY

5 YEAR RESIDENTIAL / 1 YEAR COMMERCIAL

OPPEIN warrants that its Cabinets and Parts should be free of substantial defects in materials and quality for 5 years (2 year for painted doors) following the acquisition date for Residential Customers and a period of 1 year following the acquisition date for Commercial Customers. The warranty period begins on the Purchase Date. This Limited Warranty applies to Domestic use only and covers defects in materials and quality. Labor and shipping are not included. Indoor Use Only. OPPEIN cabinetry warranty is not transferable to end-users, including consumers and homeowners who purchase OPPEIN cabinetry products through the original purchaser. All warranty actions are through the original Dealer where purchased. If that Dealer is no longer in business with OPPEIN, another dealer will be assigned.

In the event of an issue, OPPEIN will examine the product and, at its sole discretion, determine if the warranty applies. If the product is no longer available, OPPEIN will substitute a similar product. Color match is not guaranteed, as all cabinets will change over time. Please follow all assembly, installation, and care Instructions. This warranty does not cover normal wear and tear, water damage, outdoor use, or damage from misuse or abuse. The original Proof of purchase receipt is required. Please get in touch with the original Dealer or our website, www.oppeinhome.com for more information.

By purchasing the product, the original purchaser acknowledges that natural wood may vary in texture, color, and wood grain, and it may exhibit subtle changes as it ages. Sunlight, smoke, moisture, household cleaners, and other environmental conditions may cause the materials to vary from their original color to warp, split, or crack. These variations are considered natural and related to the environmental exposure of the product and are not covered under this warranty.